



**PRECISION QUINCY**



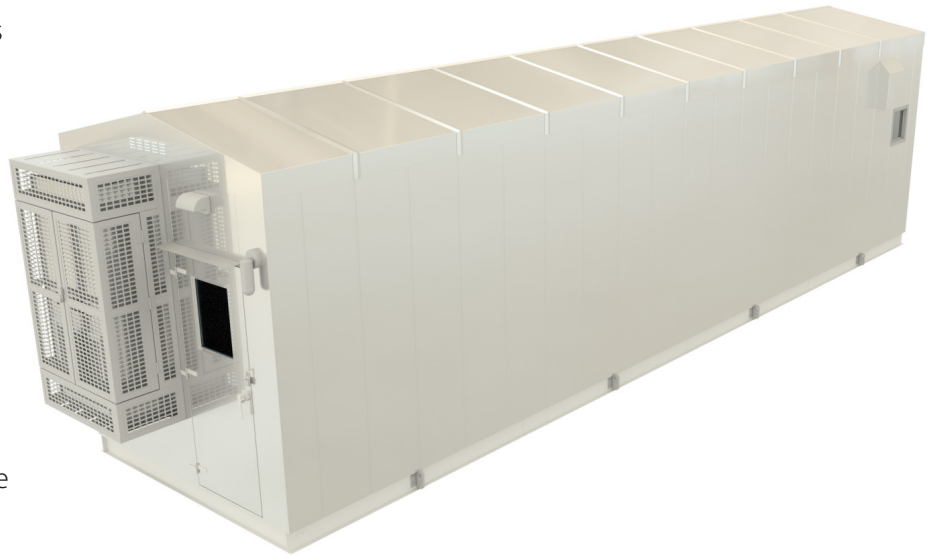
# Rail-Transit Shelters



**STANDARD 10'X20', 10'X30', 10'X40' ALUMINUM and STAINLESS STEEL  
PQI-RT1020AL | PQI-RT1030AL | PQI-RT1040AL PQI-RT1020SS | PQI-RT1030SS | PQI-RT1040SS**

## Communication & Signaling Applications

Precision Quincy Industries (PQI) Rail-Transit Shelters are built for durability and low maintenance to withstand the extreme railway environment. Constructed of corrosion resistant 14-gauge stainless steel or .100"/.187" aluminum, as well as stainless steel door hinges with grease fittings for lubrication. The full perimeter contact door gasket provides a dust-proof and water-resistant compression seal to keep out contaminants. The gable roof design with passive ventilation prevents interior condensation and includes seam caps for superior weather protection. The interior is designed to accommodate various rack layouts by utilizing the adjustable cable ladder track and lighting systems, as well as taking advantage of the multiple floor penetrations for wire and cable entry.



See reverse side for technical details



**Contact us today**

4600 N. Mason Montgomery Road | Mason, OH 45040  
513-923-5900 | sales@PQInd.com

**www.PQInd.com**  
A Division of The Armor Group, Inc.



# Rail-Transit Shelters

## Details

### Design Specification:

Floor Load (SS): 175 pounds per square foot

Floor Load (AL): 150 pounds per square foot

Snow Load: 40 pounds per square foot

Wind Speed: 110 mph Exposure C

Seismic: Risk Category II, Site Class D

Type NEMA 3R

### Construction:

Self-framing formed panels in 14 gauge 316 stainless steel or .100"/.187" 3003-H14 aluminum

### Doors:

(2) Insulated, pan-in-pan doors with replaceable filter & sliding shut-off plate

### Exterior:

Smooth-flat surface for mounting equipment

### Insulation:

Stainless Steel

Base: R-19  
Walls: R-16  
Roof: R-19

Aluminum

Base: R-15  
Walls: R-19  
Roof: R-25

### Electrical-Lighting-Environmental:

Electrical Panel: 120/240 VAC 200A, 1P, 3W

Ceiling mounted LED fixtures with 20A-3-way On/Off switch at each entry door

Vertical wall-mounted HVAC with optional vandal cage

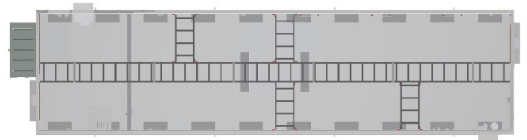
Programmable lead-lag controller auto-change digital thermostat

Motorized exhaust damper with tamper-resistant exterior hood



### Adjustable Ceiling Mounted Cable Ladder

Adjustable Cable Ladders provide customized mounting locations to meet each customer's specific needs



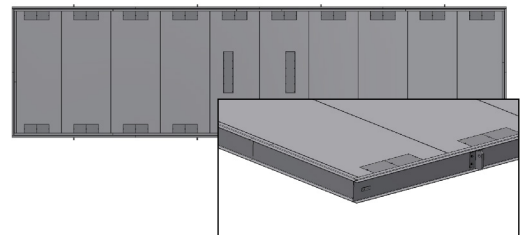
### Structural Base Frame

Accommodates equipment loads while minimizing deflection during transportation and installation



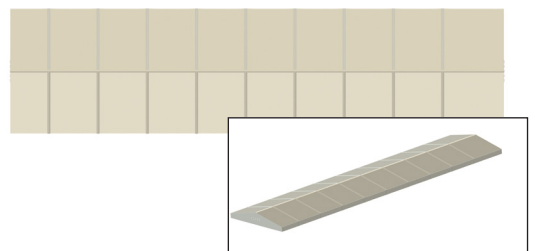
### Floor Knockouts

Full flexibility penetrations with cover plates to provide optimal locations for underground wire & cable entry



### Capped Roof

Fully covered roof seam caps for unmatched water protection



## Contact us today

4600 N. Mason Montgomery Road | Mason, OH 45040  
513-923-5900 | sales@PQInd.com

[www.PQInd.com](http://www.PQInd.com)

A Division of The Armor Group, Inc.

